

The high adhesion efficiency precision spray gun for water base conformal coating material which can perform selection coating

The maintenance

The maintenance can be performed without tools.

The FSCC06 selective coater gun does not need some tools by a decomposition assembly. The maintenance is easily possible for cleaning and washing. The parts of FSCC06 selective coater are 30 or less points, and are epoch-making highly efficient spray gun which does not need tools, such as a driver and a wrench.

Atomizing Power

Powerful systems manage atomization for maximum transfer efficiency.

Although the coating condition of a spray gun is determined by application fluid pressure power, nozzle size, and coating time, FSCC06 selective coater can adjust water base conformal coating material to the coating adjustment from 1 g/min by the adjustment ring valve travel of a needle. Film thickness can easily be adjusted between 1 μm and 50 μm . (depend on material solid content) A small area of 8 ϕ mm can be coated. Also, using gun movers, substrates such as large glasses, or substrates width up to 1m can be coated.

Dynamic Motion

Technology design that integrates systems motion and ergonomics to deliver optimal performance.

Compared to the existing air spray gun technology, FSCC06 select spray gun has higher material use efficiency (90-99 % or more).

The operating efficiency extensive improvement of water base coating material

Good fluid control is critical to an effective finishing operation.

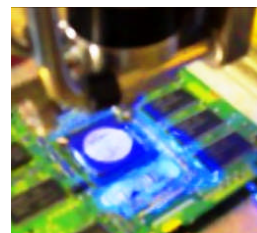
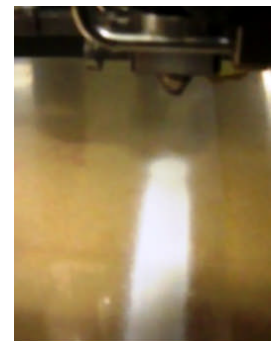
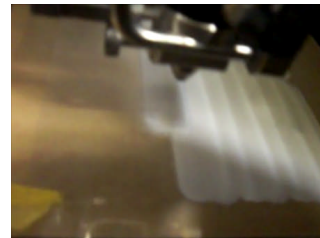
An automatic application is possible, without stopping the water material corresponding to VOC, without wasting a useless material by exact discharge control.

It can perform a limited application spray in adoption of an original thin needle & sheet mechanism, and adoption of the air cap structure of the newly developed star-shaped form. (Under patent fillings)

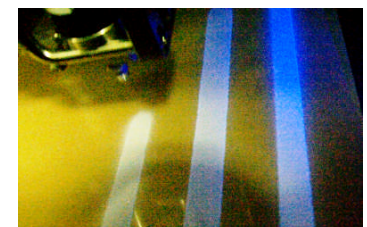


Features:

- Film thickness can be adjusted between 1 μm and 50 μm . (depend on material solid content)
- A small area of 6- 8 ϕ mm can be coated.
- Narrow coating pattern width of 2 - 10 mm can be achievable.
- For coating large substrates, an automated material feeding system operating multiple guns is available.
- There is no jam and bubble for a nozzle.



Dot spray

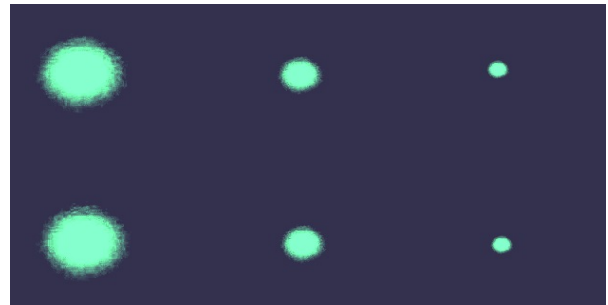


Continues spray

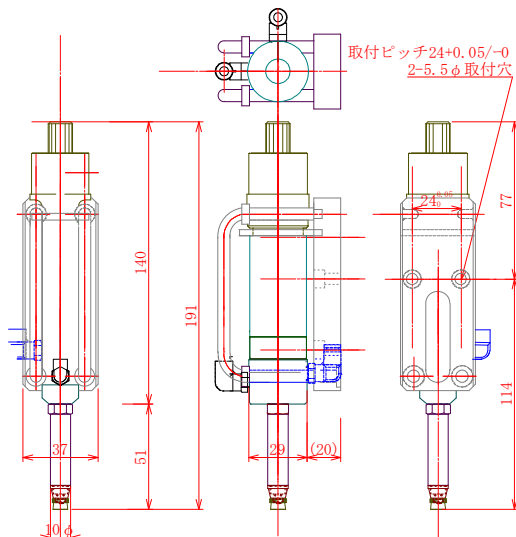
Specifications:

1. Operating air:
 - (1) Gun operating pressure: 0.3 Mpa - 0.4 Mpa
 - (2) Atomizing air pressure: 0.01 Mpa - 0.40 Mpa
 - (3) Pattern air pressure: 0.02 Mpa - 0.40 Mpa
 - (4) Nitrogen or air usage: 200 NL/min. - 400 NL/Min.
2. Material(The contact part of a liquid)
SUS303 and Teflon, Perflo, It is a nickel plate in part.
(Standard)
3. Flow rate
1.0 g / min. - 20 g / min. (* Flow rate varies depending on the viscosity of the coating material used.)
4. Coating pattern width
2 mm - 14 mm (can be changed by adjusting pattern air pressure)

Moreover, micro atomized liquid particle size after a spray is further made detailed by making static electricity impress from the rear of the needle of the gun depending on liquid material.(Option)



Dot pattern by FSCC06 selective coater



Non Circulation Type (syringe type)
Dimensions



The Star-shaped air cap of FSCC06 spray gun

Shimada Appli G.K.

3-2-17 Higashi-Urawa Midori-Ku Saitama City
Saitama Pref.336-0926 Japan
TEL/FAX:+81.(0)48.875.2811
URL:<http://shimadaappli.com/>