

FSCC06 Selective Spray Coater Case Study

Select spray application that produces high added value

 Shimada Appli G.K.

Functional Material Coating

Solder masking spray

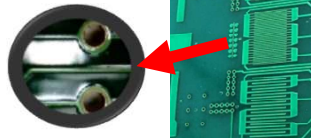
Conductive material spray

Functional liquid materials

etc. coating



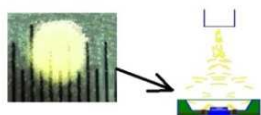
Partial coating of Pedot



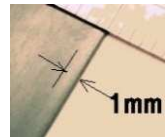
Solder resist high TE spray



Resist spray on 3D substrate

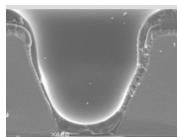


Phosphor spray



Desensitizer part Thin film coating

Partial coating of resist material



Resist coating on semiconductor

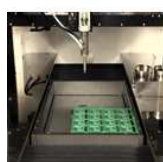
Conformal Coating

Solvent type, Water based,

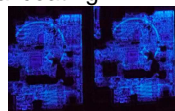
Solvent-less, Fluorine-based



Various conformal coating



Back side coat



Partial coating



Waterproof to terminals



Solvent-less Silicone coat



Solvent type conformal coat

Painting, gluing, marking

Partial coating of building material parts

Painting automotive parts

Marking



UV painting



Various design painting



Marking to tunk



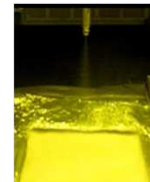
Paint to automotive parts



Side coating



Painting with multi-gun



Paint on non-woven fabric



UV coating

Features of FSCC06 selective spray coater

- Selective application of coating material with viscosity up to 1500 CPS
- High-speed coating of fine wire around 1 mm is possible
- Good coating stability and atomization even in the viscosity range of $\pm 20\%$
- Optimal coating method for uneven surface coating
- 50% reduction in drying time

Main application range of FSCC06 selective spray coater

- Various thin film coatings on optical coating objects
- Deposition of functional materials for semiconductors, MEMS, WLP
- Maskless painting of in-vehicle parts (lower parts, interior parts)
- Thin film coating of materials containing conductive filler
- Partial painting of the siding board end face
- Conformal coating on PCB (solvent-free, fluorine-based, etc.)
- Thin film partial coating on various battery-related materials
- Functional film formation on non-woven fabrics (water-based emulsions that easily clog)
- Thin film coating for cell culture in regenerative medicine

Medical, bio, food, cosmetics

Thin film coating on cell culture equipment related to regenerative medicine

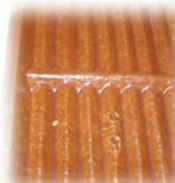
Thin film coating of high viscosity agent



β -chitin NF



Thin film coating on petri dish



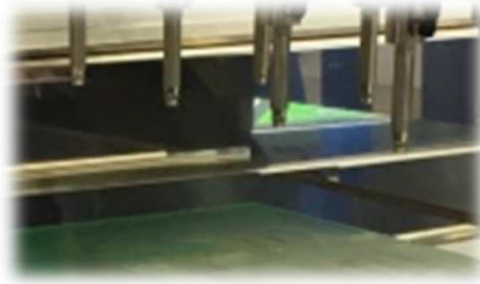
Latex spray

Various food spray

FSCC06 Selective Spray Coater Case Study



Mounting on Cartesian robot



Multi-gun mounted on XY robot



Mounted on a single-axis robot FSCC06 gun



Multi-head for body painting



Multi fixed head for fine wire



FSCC06 gun with articulated robot



Automatic coating width variable FSCC07 gun



Microgun with leaf nozzle from 150mm width



2-axis (with α , θ) operation valve



FSCC06 Gun applied from below

Please contact us for the order of this device.



Shimada Appli G.K.

〒333-0842

3 - 7 - 15-101 Maekawa, Kawaguchi-cty, Saitama Pref.

TEL: +81-48-269-7703 Email :

<http://shimadaappli.com/>